

MOUNTAIN LAKE LIVING

How To Max Out Your Outdoor Fun

Ingeniously Inspired
Smart Space Studios

Tales Of New Trails



Schweitzer

Rockin' it on Lake Pend Oreille as Schweitzer towers above.

Get Well. Do Well. Be Well.



When you feel better,
you do better.

A simple, long-proven principle that is the foundation of Schweitzer's distinctive new Cambium Spa. Taking an approach that's decidedly different from that of a typical spa, Cambium offers very practical, highly effective therapies and treatments targeted to elevate your body's capabilities and capacity for recreational and athletic adventures on and off the mountain.

"When you're stronger, more resilient and relieved of aches and soreness, you can perform at an optimum level whether you're bombing down a mountain or taking a leisurely stroll along a scenic trail."

—Sabrina Wright, Cambium Spa Manager

The spa's cadre of exceptionally trained and experienced therapists, coupled with the most advanced healing equipment and products, are all focused on refreshing, restoring and rejuvenating your body. The goal? To go beyond just making you feel good—to make you feel your best so you have more energy, more mobility and frankly, more fun.

Let's not forget about the power of relaxation. The spa also offers services dedicated to helping you relax, de-stress, release tension and regain a soothing sense of calm and composure, which are vital to its holistic approach to your wellness.

Cambium Spa is open to Schweitzer's owners, guests and area residents. For hours, a complete menu of services and appointments please visit schweitzer.com.





6

1. Gathering Room Relax in the company of family and friends with a glass of champagne, perhaps fresh fruit or another wholesome treat. **2. Normatec Compression Pants** A proven recovery system that utilizes compressed air to massage your legs, mobilize fluid, reduce soreness and speed up recovery so you're quickly recharged to do whatever you like to do the most. **3. Reflexology** Key to relieving stress and tension by focusing on your feet and legs. Areas in the feet correspond to all major organs, glands and body parts. Reflexology stimulates more than 7,000 nerves in the feet, opening and clearing neural pathways. **4. Sound Lounge** A quiet room with soothing sounds, healing vibrations and complete body support for maximum relaxation of mind and body. In a zero-gravity condition, with no pressure on joints and muscles, you'll experience changes to your entire energetic field. **5. Halo Infrared Salt Therapy** A synergistic combination of infrared sauna and dry salt therapy that improves your respiratory function, boosts your endurance, expands your lung capacity and increases your oxygen intake. It also provides cellular detoxification and anti-inflammatory advantages. A truly transformative experience, it engages all five of your senses. **6. Cambium Ambassadors** Friendly, supportive spa concierges who cater to your personal requests and further your treatment knowledge and understanding. **7. Massage Therapy** Cambium's signature massage is the Forest Air Salt Stone Massage with Essential Oils. It offers the health benefits of releasing deep stress and nervous tension with forest air oils while the detoxifying salt crystals are anti-fungal and anti-bacterial.



7

COMING ATTRACTIONS

Planned expansions to Cambium Spa begin with a glass-walled "sky bridge" fitness facility connecting the spa to a Pool Pavilion, which is intended to house changing rooms, gathering and event space as well as a co-working office amenity. The pool complex concept includes a spa pool, infinite edge pool, therapy pool, polar plunge pool, fire pit and saunas. A "Bergschrund" ice bar may also be in the making.



This image is used for illustrative purposes only and is intended to convey the concept and vision for a proposed development plan and does not represent a final or complete selection of a finished product and which is subject to change without notice. Developer expressly reserves the right to make modifications in its sole discretion. No guarantee is made that the facilities depicted will be built or, if built, will be of the same type, size or nature as depicted.



Berry Berry Good

Idaho's sweetest secret is its iconic state fruit: the huckleberry.

You won't find huckleberries at your typical supermarket or on a farm. These sweet, tangy berries grow only in the wild. They thrive in acidic mountain soils at high elevations around the American Northwest.

Huckleberry picking is a favorite family-friendly summer activity here at Schweitzer.

The folks at Schweitzer's Summer Activity Center have a wealth of insider tips. Just ask, and they'll point out the trails most likely to lead you to huckleberry heaven.

You can also hop on Schweitzer's Saturday morning huckleberry shuttle. Throughout the season, the shuttle will take you to hot picking spots with very little hiking required. The entire family—from little kids to grandparents—will have heaps of fun hunting the vibrant purple berries.

The tiny huckleberry is actually a Superfood, rich in vitamin C and antioxidants believed to reduce inflammation in the body. Its sweet flavor is perfect to mix into pancakes and muffins, with lemonade or margaritas.



Dramatic. Inspired. Exclusive. Crystal View

Make the most of Schweitzer's four-season mountain lake community by creating your unique retreat on one of the newly released homesites in a remarkable slopeside neighborhood called Crystal View.

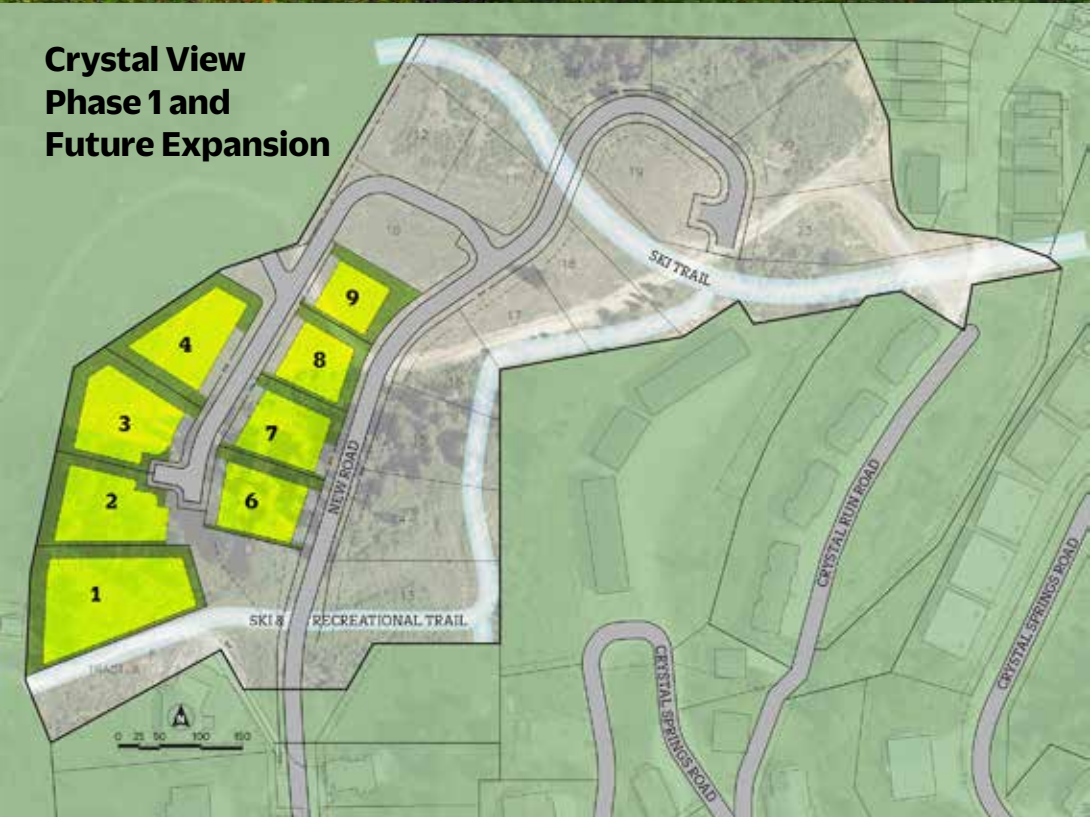
Now being offered for the first time, Crystal View is an intimate, ski-in/ski-out enclave endowed with magnificent panoramas of Lake Pend Oreille, ski trails, forested mountains and the valley below.

As your totally custom vacation, seasonal or permanent home, you will be able to live life in your own way, in your own style. You can make your home just the right size to accommodate your family and friends as well as have plenty of room for remote working and learning spaces plus all your adventure toys and gear.

All homesites will be served by community-maintained roads and are approved for building. Available utilities will include electricity, water, sewer, high-speed internet and natural gas.

Since its recent release, Phase One has already generated significant interest from those looking to create something they've always wanted. Located close to Schweitzer Village's amenities and activities, your home in Crystal View will reward you with the pinnacle in active mountain experiences.

Please contact John Calhoun: 435-640-7757/jcalhoun@schweitzer.com
3 MOUNTAIN LAKE LIVING 2023



It's A Wrap— 5 Needles Poised For Summer Move-In.



View of Lake Pend Oreille from 5 Needles



View of Schweitzer ski hill from 5 Needles

The inspired story of Schweitzer's first residential offering in 20 years is heading for a fabulous finish.



5 Needles' new owners will soon have all the comforts, conveniences and luxuries of their private home to enjoy whenever they want to visit this four-season mountain wonderland.

An eloquent addition to White Pine Lodge, 5 Needles' 26 condominium residences were custom tailored in mountain contemporary style by CollinsWoerman's lead architect, John Eckert, and his Spokane-based team.

The homes' unobstructed windows and outdoor decks provide picture perfect panoramas of the Village, a variety of dramatic ski runs, forested mountains and the prodigious expanse of Lake Pend Oreille.



The top floor features two-story plans that showcase soaring 28-foot beamed ceilings and full-height window walls and striking tiled fireplaces.

These distinctive residences feature many of Schweitzer's forward-thinking design elements, such as CO₂-emissionless vapor fireplaces, all-electric heating and cooling, premium European appliances, and provisions for electric vehicle charging stations.

And now, thanks to the professional wizardry of CollinsWoerman's design team, the interiors of the 5 Needles homes are equally as unique, fresh and imaginatively fashioned as the exterior.

"5 Needles' outstanding success is proof positive that the Schweitzer experience is extremely valuable, and our guests want more of that experience in their lives," says Lance Badger, Schweitzer Chief Development Officer.

For more information on all Schweitzer residential real estate offerings please contact John Calhoun: 435-640-7757 or jcalhoun@schweitzer.com.

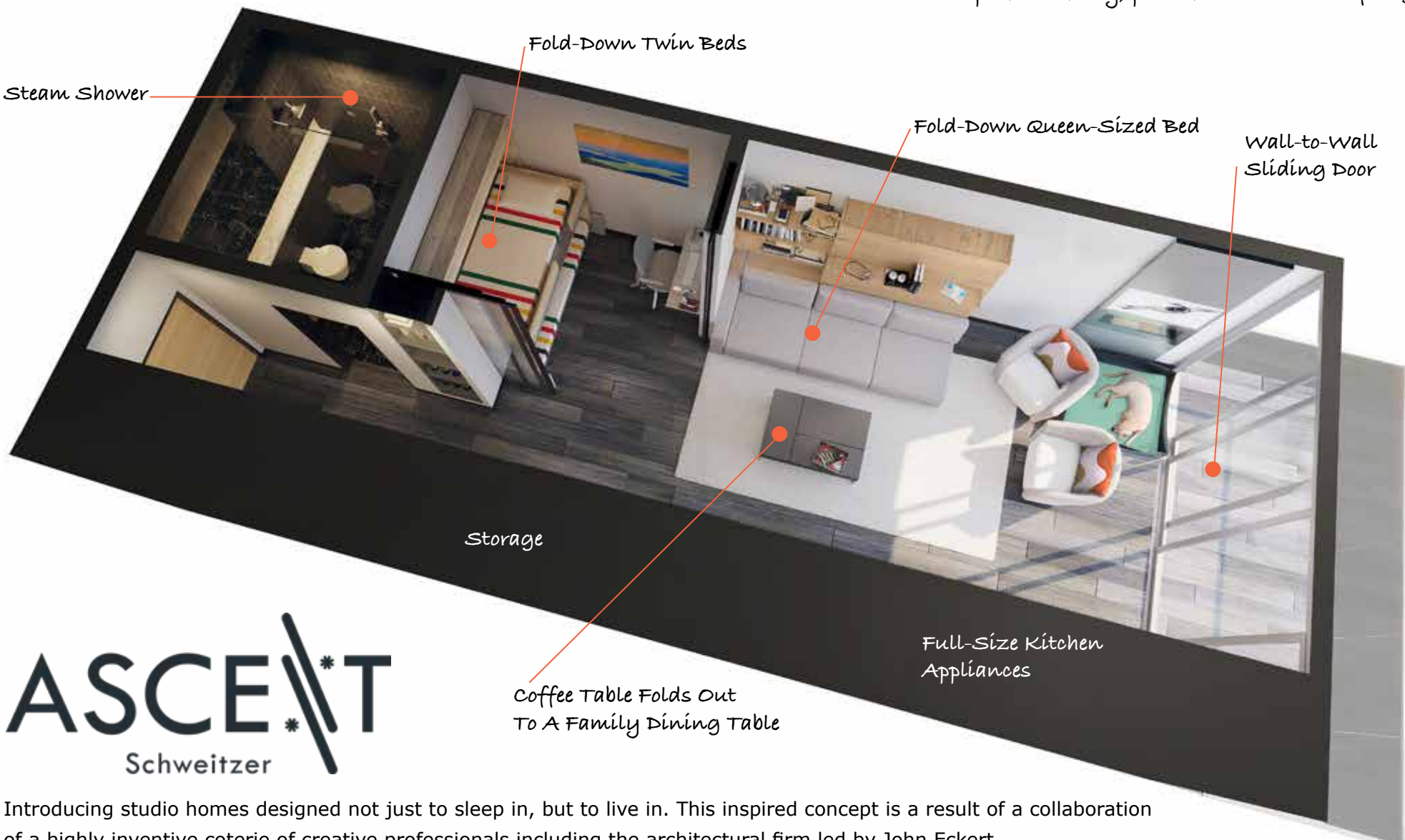
SchweitzerRealEstate.com

New Smart Space

Most innovative use of space since



Proposed amenity, private indoor/outdoor fun & su



ASCE
Schweitzer

Introducing studio homes designed not just to sleep in, but to live in. This inspired concept is a result of a collaboration of a highly inventive coterie of creative professionals including the architectural firm led by John Eckert.

The method to develop these ideal studio homes was to “color outside the lines” in order to not only maximize space, but to maximize convenience and comfort as well.

The smart space studios graciously accommodate diverse groups of family members and friends. For example: a family with a teenager and two little ones; four adult friends; a college-age kid and a group of buddies; a month-long stay working remotely; a week with beloved Mastiffs Fido and Flora; or a welcome getaway just for Mom and Dad. It must also be suitable for Schweitzer’s Rental Program.

So
after
har
For
furn
as
unc
tab
six
sho
add
the
a w
dec
kito
coo
The
lod
own
fea
ind
loc
win
Fin
can
Ple
43
jca
for
res

Studio

e Star Wars



in spot for owners & friends

how do you create a home your family can enjoy
er a day on the mountain or an evening partying
rdy?

r starters we're welcoming innovative ideas in
niture—what's called multi-use furniture such
king- and queen-sized beds that roll out from
der TV cabinets, fold-down twin beds, and coffee
les that, like magic, expand into dining tables for
. How about bathrooms with combination steam
ower/saunas, sliding privacy walls that enclose an
ditional sleeping/lounge/work room, and to bring
outdoors in as well as expand the living space—
wall-to-wall sliding glass door that opens to a view
ck. Other "must haves" include fully equipped
chens with standard-size appliances plus a wine
oler, and, of course, a washer and dryer.

e Ascent ski-in/ski-out, bike-in/bike-out residential
ge in Schweitzer Village will have 41 homes plus
ner amenities including a recreational courtyard
turing spa pools, fire pits, a BBQ, pizza oven, an
oor community kitchen, plus a fitness facility, ski
ker room, bike storage space and a parking garage
ed for EV charging stations.

**nd out more about this enlightened concept in
refree mountain living.**

**ase contact John Calhoun at
5-640-7757 or
alhoun@schweitzer.com
t smart space studio and
ervation details.**



Top floor studio interior with sliding glass wall opening to deck



Sliding wall encloses daytime lounge/working room



Sliding wall encloses sleeping room at night

DISCLAIMER All rendering images, illustrations, features, furnishings, finishes and information presented in this publication are conceptual only and used for illustrative purposes. Everything presented is subject to change or elimination without notice. They do not accurately represent the features of any specific condominium unit.

Inspired Tastes of Traditional



Dishing out seasonal favorites is always a way to keep the joy of cooking and eating fresh and perhaps enlightening. At Humbird’s Crow’s Bench restaurant and lounge, the advent of spring and summer has inspired our chef to showcase two traditional favorites, lamb and lobster.

Served either warm or cold, the Lobster Bisque is a saffron and tomato bouillabaisse, crowned with sautéed lobster and crème fraiche adding chili threads and a fennel frond to garnish.

Posh with the seasonal flavors of fennel, peas and fresh lamb, the Fennel Pollen Crusted Lamb Chop is a bit more adventurous in a mélange of potato confit, mint pea puree, roasted carrots and demi-glace.

These are tried and true culinary achievements you are invited to try at home. Just point your camera and you’re on your way to a meal celebrating a warmer style of mountain living.

Crow’s Bench Reservations: 208-255-3051



Schralpenhaus Completion Coming Soon

Answering Schweitzer’s commitment to providing first-rate employee housing, the first phase of 84 residences in a new community called Schralpenhaus, is nearing completion. As the saying goes, “the excitement is building” for Schweitzer’s first group of residents who are gearing up for move-in day in the fall of 2023.

“Seeing this community come to life is a proud moment for Schweitzer, our managers and staff plus the entire Sandpoint area,” says Scot Auld, HR Director. “With the opening of these residences, a much needed and much anticipated facility is a reality for our employees and their families.”

Phase I encompasses three residential

buildings: two buildings, each with 24 residences and one building with 36 residences. The mix of pet-friendly homes includes 9 one-bedrooms, 63 two-bedrooms and 12 three-bedrooms. They all feature full kitchens, washers and dryers, access to bike and ski storage plus a welcome convenience—there’s a bathroom for every bedroom.



All rendering images, illustrations, features, furnishings, finishes and information presented in this publication are conceptual only and used for illustrative purposes. Everything presented is subject to change or elimination without notice.

The benefits of Schralpenhaus are more than providing housing. Careful thought has gone into fostering residents’ quality of life. An impressive example is the community courtyard. It’s a marvelous outdoor recreation and leisure time amenity for the entire neighborhood. At this time, the courtyard concept includes a covered pavilion with two BBQ’s, a six-foot diameter firepit with room for 14 people, a lawn area with two beanbag tossing sites, picnic tables, and a covered shelter with a double-sided ski waxing table and two bike repair stations. In addition, there are bike racks, a bike washing station, a dog washing station, a pet relief area and benches to enjoy a little relaxation.

For kids and adults there’s a play area with a net climber plus boulders, logs and stumps just for fun. And no courtyard would be complete without plenty of shade trees and walkways.

“Creating quality housing in a desirable location at a more affordable cost—it’s a remarkable accomplishment by everyone involved,” says Scot.

The Road to Riches

"The West's Best Scenic Drive," according to Sunset Magazine, starts at the bottom of Schweitzer Mountain.

It's The International Selkirk Loop, a 280-mile route that encircles the spectacular Selkirk Mountains of Washington, Idaho and British Columbia. Travel through spectacular natural scenery of incomparable diversity, from wild river canyons to fertile valleys, from glacier-gouged lakes to green-belted, white-topped mountains. Along the route, Mother Nature provides spectacular displays of vivid green foliage, radiant wildflowers, rushing waterfalls, verdant forestlands and vivid blue skies.

Brimming with family adventures, the Loop continually entices with a multitude of intriguing attractions and side trips

along the way. Unique local cuisines can be found at waterfront restaurants and in a cavalcade of historic small towns. Discover art, music and cultural festivals and events at every turn.

Outdoor adventures abound as well. Rent a boat, hop aboard a car-carrying lake ferry, hike or bike a never-ending medley of scenic trails, try baiting a hook or geo-caching, capture native birds, moose, deer and elk on camera, or just delight in this region's fascinating history.

The Loop also enjoys a reputation as truly relaxing, with uncrowded roads and wide-open spaces. Travel the loop in one action-packed day, or wander and explore for as long as you like. Every trip, and every season, you'll be richly rewarded.



Kootenay Lake Free Ferry.



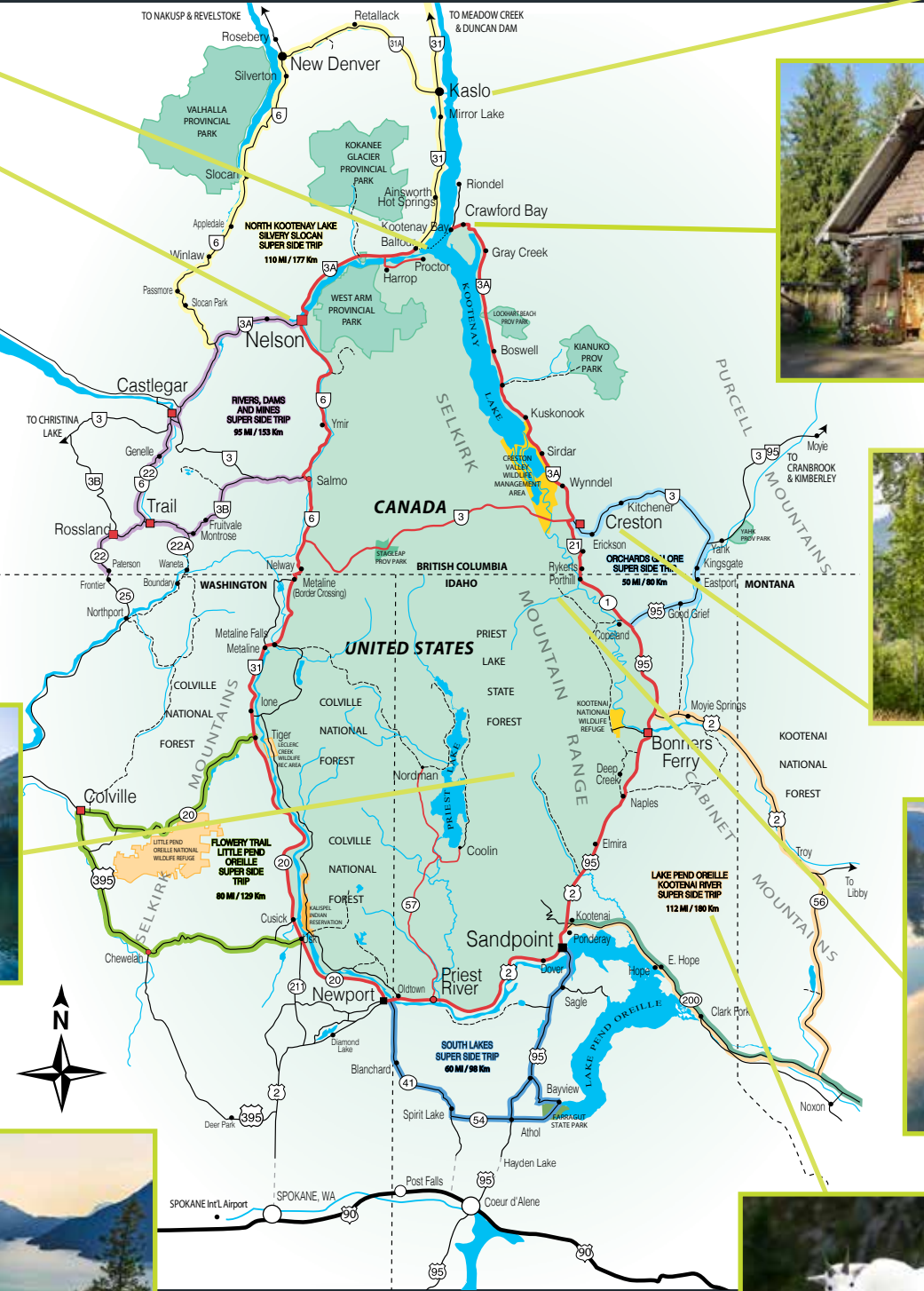
Nelson's annual ArtWalk.



Beehive Lake.



Scenic view along the International Selkirk Loop.



For more information, visit selkirklloop.org or visitid.org.



Kaslo Jazz Etc. Summer Music Festival.



North Woven Broom, corn brooms on unique handles.



Bird watching tower at the CVWMA.



Kootenay River vista from Porthill.



Mountain goats are frequently seen when hiking on Scotchman Peak.

Perfect Place To Paddle

Ensnored in a pristine wilderness of verdant forests, mountain vistas and abundant wildlife, Upper Priest Lake provides an enchanted escape into nature. Remarkably, this secluded land is an easy day trip from your home at Schweitzer.

The rugged Selkirk Mountain Range surrounds this sequestered area, which is protected from development as a Federally Designated Scenic Area. At only 3.5 miles long and less than a mile wide, Upper Priest Lake is a true oasis. The only way to reach it is by hiking or biking in—or by floating along a spectacular, 2.5-mile waterway known as "The Thoroughfare," which meanders past white pines and fir trees, mossy green banks and mountain vistas. Its shallow, crystal-clear waters, along with its designation as a "no-wake zone," make it ideal for canoes, kayaks, rowboats and paddleboards.

Pack a picnic for an unforgettable day trip or plan to camp at one of the many beaches along the shore. By day, observe moose, bald eagles and more in their natural habitat. At night, with almost no light pollution, behold a magnificent starry sky.

For more information, visit priestlake.org.

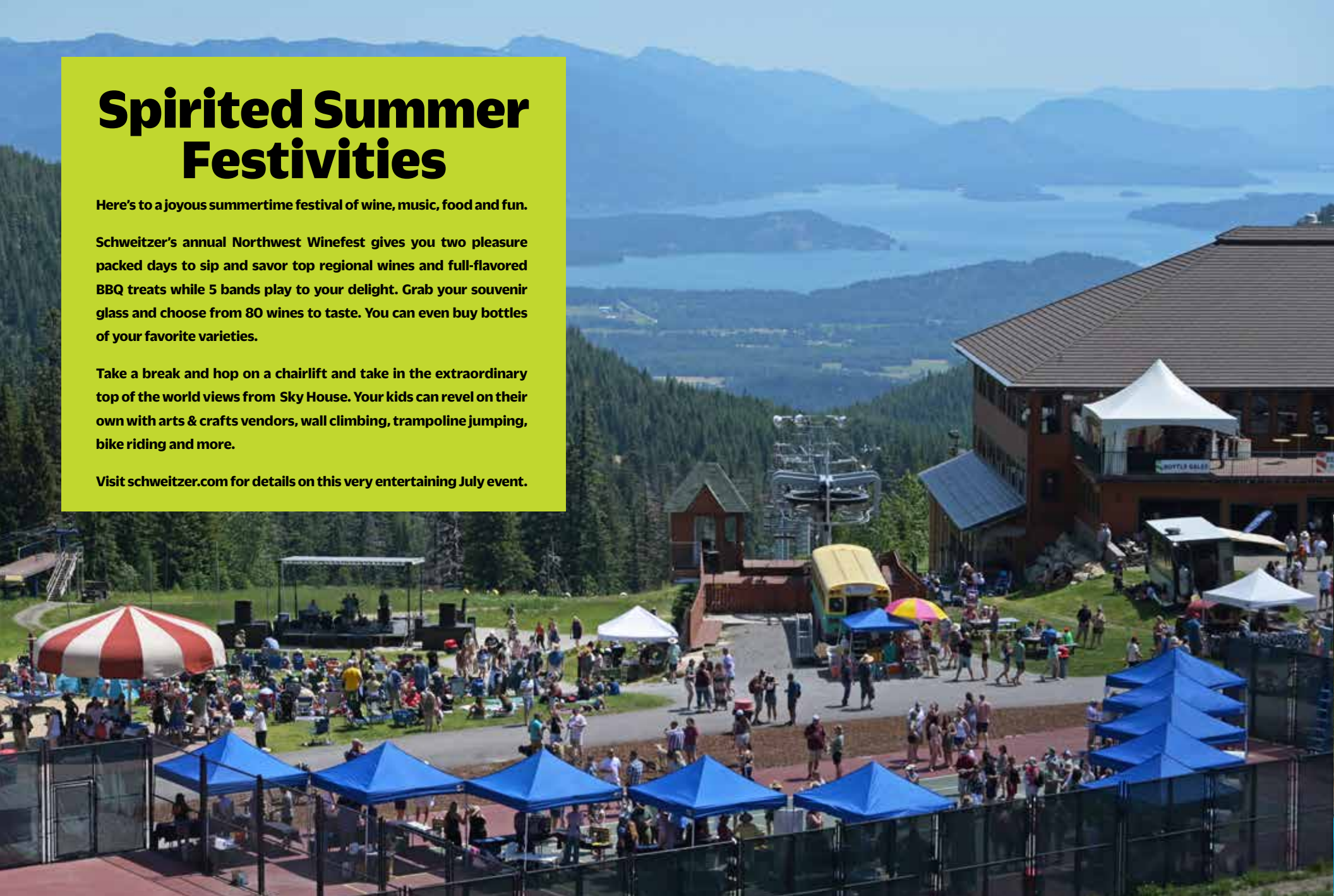
Spirited Summer Festivities

Here's to a joyous summertime festival of wine, music, food and fun.

Schweitzer's annual Northwest Winefest gives you two pleasure packed days to sip and savor top regional wines and full-flavored BBQ treats while 5 bands play to your delight. Grab your souvenir glass and choose from 80 wines to taste. You can even buy bottles of your favorite varieties.

Take a break and hop on a chairlift and take in the extraordinary top of the world views from Sky House. Your kids can revel on their own with arts & crafts vendors, wall climbing, trampoline jumping, bike riding and more.

Visit schweitzer.com for details on this very entertaining July event.



BEAUCOUP BOUQUETS



Sunflowers, dahlias, snapdragons, tulips, peonies! Sandpoint's Grumpy Chicken Farm welcomes families, couples and small groups to experience an entire acre of flowers in bloom.

The farm now boasts over 100 varieties of flowers, including at least 30 varieties of sunflowers alone. It's an amazing place to roam among the beautiful blooms and pick your own bountiful bouquet to take home. Owner Renee Nelson will even help you make the most of your prize pickings with flower arranging classes.

Grumpy Chicken hosts a range of memory-making events, from Yoga in the Flowers to private "you-pick" parties and weddings. This year, Grumpy Chicken plans to add pick your own farm-fresh vegetables as well.

"One of our most popular events is the 'Sip and Clip,' held every Friday starting in mid-July until September," says Renee. "After mingling and enjoying snacks and beverages, we go out to the field to pick a big bouquet of flowers before sunset."

You can also have scheduled deliveries of flowers to brighten your home throughout the spring and summer. For more information, visit grumpychickenfarm.com.





For Instant Family Fun, Just Add Water

You've probably seen a good number of lakes in your travels. But chances are, you've never experienced a pure, nature-made, freshwater lake the equal of Schweitzer's neighbor, Lake Pend Oreille (pon der ray).

This enormous body of water is Idaho's largest lake at 43 miles long (nearly as long as Lake Ontario) with 111 miles of shoreline. (It would take 118,539 oar strokes in a kayak to cruise the entire coastline.) More big news: It's the fifth deepest lake in America at 1,158 feet. This all-natural lake, sprawled between three mountain ranges more than 100 million years old, was clawed out by Ice Age glaciers. It is so expansive and deep that the U.S. Navy continues to test submarines from its station at the south end of the lake.

Lake Pend Oreille offers virtually unlimited family adventures and activities on, under and all around this extraordinary sea-sized Valhalla. While most of the lake is undeveloped, there are 36 public parks, recreation areas and lake access sites that range from primitive and remote to full service with marinas, restaurants, lodging and shops. Some can be reached by car, some on foot, and some only by boat.

Shoreline exploits span from cliff diving, scuba diving, and camping to swimming, fishing, wildlife viewing, hiking, biking, picnicking, or just lounging and playing on the beach.

The lake's huge expanse welcomes almost any water-worthy pleasure craft, from sailboats, ski boats, houseboats, fishing boats and jet skis to human-powered vessels such as kayaks, canoes and paddleboards. Don't have a boat handy? There are rentals of sail, paddle and power vessels at various lake marinas. You can also charter a boat with a crew and fishing guides.

Lake fishing here is some of the finest in the Rockies. Varieties include mackinaw or lake trout, large- and small-mouth bass plus Kamloops such as the delicious whitefish as well as Gerrard rainbow, brown and cutthroat trout—and that's just for starters.

For more fun information visit: <https://www.sandpointonline.com/rec/lakeguide/index.html>



BLAZING NEW TRAILS



Encompassing 8,000 acres, the Little Sand Creek Watershed is poised to fulfill its dream as a naturally endowed recreational parkland that will not only continue to provide the highest caliber drinking water, but also introduce an abundance of sustainable activities and amenities that will enrich and enliven a diversity of outdoor enthusiasts.

This dream is being created within the Little Sand Creek Watershed Recreation Plan under the direction of Maeve Nevins-Lavtar and a host of dedicated professionals, governmental agencies, outdoor activists and landowners.

“Since the Little Sand Creek Watershed is a valuable water source for Sandpoint, the plan’s vision has to be two-fold: protect and enhance the watershed’s water quality while opening the area to a range of recreational and educational experiences for people of all ages and physical abilities. It’s a delicate balance to be sure.” — Watershed project manager Maeve Nevins-Lavtar, Sandpoint Park Planning & Development Manager

A mélange of landowners includes the U.S. Forest Service, Bureau of Land Management, Idaho Department of Lands, City of Sandpoint and Schweitzer.

Coordination efforts brought together major proponents such as the Pend Oreille Pedalers, Sandpoint Nordic Club, Kaniksu Land Trust, and the Kalispel Tribe. In addition, technical expertise from the National Park Service—Rivers, Trail & Conservation Association and the International Mountain Bike Association—The plan will incorporate new and improved multi-use trails with existing trails to be used throughout the year for everything from mountain biking, hiking, Nordic skiing and snowshoeing, to more “commune with nature” activities such as berry picking, educational programming, dog walking and wildlife/bird viewing.

When completed, the entire trail system is envisioned to stretch some 50 miles. Fact is, going from the top of Schweitzer’s “High Point” trail at 6,100 feet elevation down to 2,600 feet—it’s an extraordinary 3,500-foot drop. While an off-road recreation trail from the watershed to Sandpoint isn’t there yet, you can always take the road route into town. Another objective is to connect trails with Schweitzer’s lift system so you can take an easier way up before making your downhill run.

The trail system will offer the cherished backcountry experience not just to experts, but to beginners, toddlers in strollers and even those with disabilities. Increasing diversity and breaking down outdoor recreation barriers are important goals. Schweitzer’s own Ski & Bike Patrol Director, Arlene Cook, a knobby tire virtuoso, leads women-only bike rides at Schweitzer.

So far, the stars are aligning beautifully. The plan is on course to be approved in 2023.

To learn more about the Watershed Plan visit: <https://pendoreillepedalers.org/lower-basin-buildout/>