

# MOUNTAIN LAKE LIVING



Where families go to come together



# Pick your powder. Choose your corduroy. Select your chute.



As the largest ski area in Idaho and Washington, Schweitzer boasts 2,900 skiable acres, including 1,200 tree-skiing acres. They are served by 10 lifts leading to 92 named runs. All this room and all of these runs make it easy to enjoy the 300 inches of annual snowfall.



To get a little insight into the particular pleasures of Schweitzer's varied terrain (which delightfully range from thigh-burning thrills to relaxed cruising on corduroy) we talked with six-decade skier and current ski instructor Larry West, who started skiing Schweitzer in 1964.

**"High-speed quad chairs and the expansive territory mean you can spend your day on the slopes instead of in lift lines," Larry says.**  
**"At Schweitzer, you'll love it any way you rock it."**

To see all runs and lifts go to: [schweitzer.com/mountain-info/maps](https://schweitzer.com/mountain-info/maps)



#### ENCHANTED FOREST & HAPPY TRAILS.

The bunny hills for little kids and beginners. Moderate steepness and a section with trees.



#### BASIN EXPRESS LIFT.

Your portal to South Bowl intermediate skiing with terrific views and access to the Terrain Park.

#### KANIKSU.

Larry's #1 choice. A beautifully groomed straight shot of 2,400 vertical feet and 250 pure power turns from [Sky House](#) to the Stella lift. Black at the top to blue 25% down.

1 MOUNTAIN LAKE LIVING 2025



#### TREE SKIING.

Take the Great Escape quad for glade tree skiing. Watch out for snow ghosts.

#### LITTLE BLUE RIDGE RUN.

At 2.1 miles, the longest run on the mountain. Intermediate with some steep sections. Stop at the [Outback](#) for a hearty breakfast, lunch and some lively music.



#### THE GREAT DIVIDE | VAGABOND.

After enjoying a meal or your favorite beverage at [Sky House](#), take The Great Divide to Vagabond down to the [Outback](#) and the Stella chair. It's a lengthy intermediate journey.



#### SHOOT THE CHUTES.

Grab the Lakeview Triple to the top of the South Bowl and take your pick of 9 cliff-narrowed chutes to "shred the gnar." Not enough? There are 6 more off the Great Escape lift.



#### BACKCOUNTRY BEAUTY.

The most adventurous powder hounds can explore 4,350 acres of pristine backcountry terrain with guided cat skiing and snowmobile tours.

Photo credit: Schweitzer

SMPdevelopment.com

# SLOPESIDE SILLINESS



Here's a silly idea. Celebrate Schweitzer's spring finale by entering its wild and woolly Cardboard Box Derby. All you need are some sheets of cardboard, a lot of tape and a bit of harebrained derring-do, and voila! You're ready to slide down the hill to victory, capturing a prize and a lifetime of kudos.

Here victory means making it across the finish line with the fastest time and an intact sled.

Only two riders per box with helmets and glasses. Sorry, but you can't use any other materials or add any enhancements like wax or a jet engine. Only 30 spots available, so register early. [Schweitzer.com/cardboardboxderby](http://Schweitzer.com/cardboardboxderby)



## Discover Schweitzer Before It's Discovered

Schweitzer and the lakeside town of Sandpoint sit atop northern Idaho's panhandle, cradled between Washington and Montana. This relatively undiscovered, yet exceptionally picture-perfect Rocky Mountain location is easily accessible by planes, trains or automobiles.

You can fly to Spokane International Airport and take a scenic 90 minute



drive north. This airport—Washington State's second-largest—facilitates more than 120 daily flights by seven major airlines with nonstop flights to more than 21 destinations throughout the U.S., including Seattle, Portland, San Francisco, Los Angeles, Orange County, Dallas, Minneapolis, Atlanta, Chicago and more.

If you fly privately, the Sandpoint Airport is an easy

access point to and from Schweitzer. At an elevation of only 2,131 feet, it boasts a lighted runway of 5,501 feet by 75 feet, which

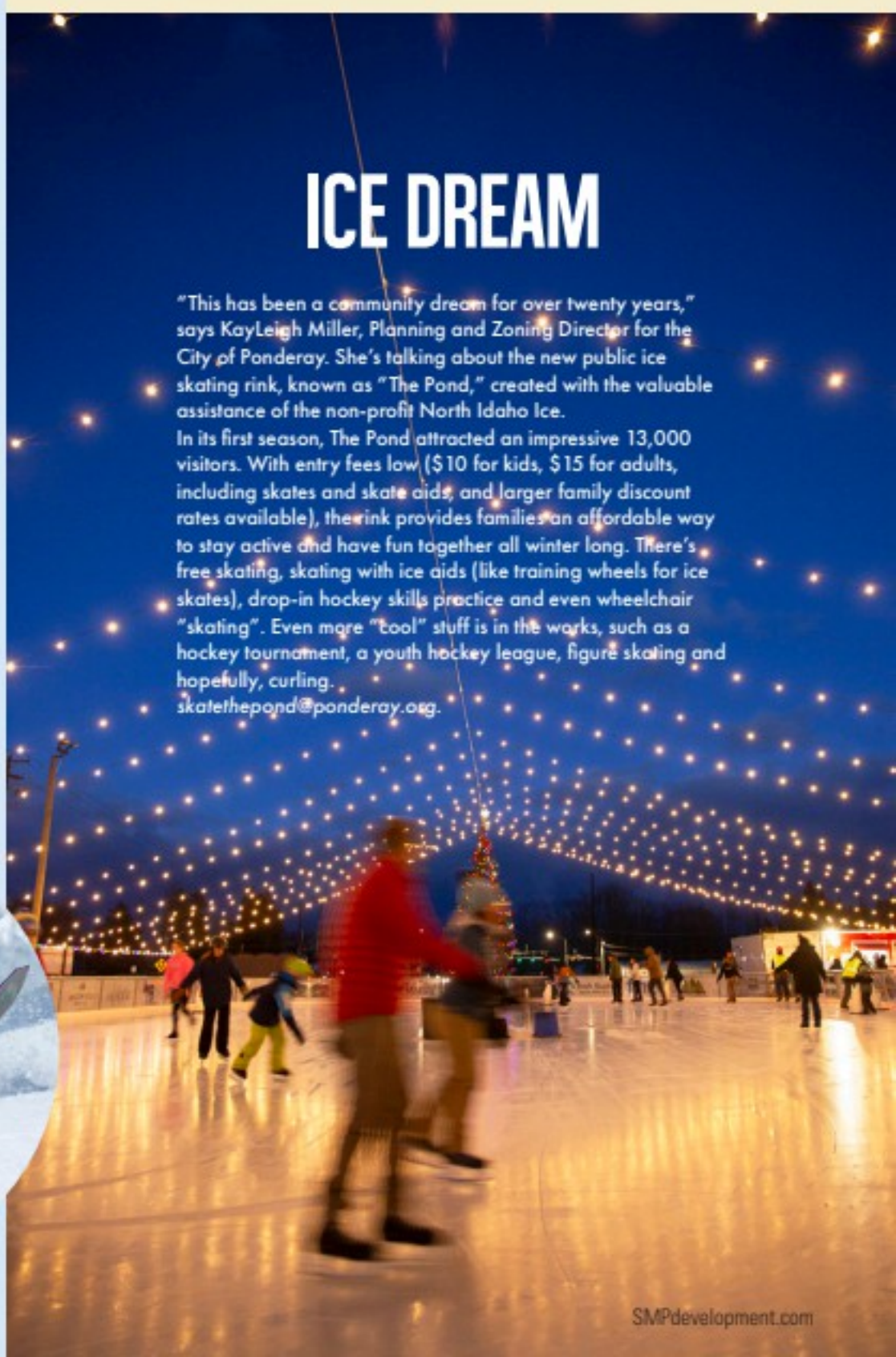
can accommodate aircraft as large as the G5. Its full-service FBO, Granite Aviation, provides everything required to make your private air travel a breeze.

Driving mostly freeway and highway routes, it's just 4.5 minutes from Coeur d'Alene, three and a half hours from Tri-Cities and a six-hour, cross-state jaunt from Seattle.

Sandpoint is home to the only Amtrak station in Idaho, serving locals east and west on the Empire Builder. [schweitzer.com/discover-schweitzer/directions](http://schweitzer.com/discover-schweitzer/directions)

## ICE DREAM

"This has been a community dream for over twenty years," says Kayleigh Miller, Planning and Zoning Director for the City of Ponderay. She's talking about the new public ice skating rink, known as "The Pond," created with the valuable assistance of the non-profit North Idaho Ice. In its first season, The Pond attracted an impressive 13,000 visitors. With entry fees low (\$10 for kids, \$15 for adults, including skates and skate aids, and larger family discount rates available), the rink provides families an affordable way to stay active and have fun together all winter long. There's free skating, skating with ice aids (like training wheels for ice skates), drop-in hockey skills practice and even wheelchair "skating". Even more "cool" stuff is in the works, such as a hockey tournament, a youth hockey league, figure skating and hopefully, curling. [skatethepond@ponderay.org](mailto:skatethepond@ponderay.org).



# An Inside Look At Interior Designers



*One of the most important, but too often overlooked aspects of building a custom home is the role of the interior designer. Here in the mountains, you do spend a lot of time outdoors, but indoor time is equally essential. Your architect and builder can create a physical home, but it's the interior designers who give it the pleasing, personal touches that make it comfortable, enjoyable and even fun to actually live in. You needn't stray too far to find enlightened and talented designers to make your home look and feel just like you.*

## 1 BASE CAMP DESIGN

Rooted in a deep appreciation for nature and the joys of mountain living, Base Camp Design's vision embraces a lifestyle that values authenticity, connection, and place. Founded by Kate Lyster, Base Camp is built on a simple philosophy: a home should be not just a place to live, but a space that tells an owner's story and responds to the natural beauty around it.

Their design approach has flourished throughout the Schweitzer community. It favors lasting values over trends, shaped by your lifestyle, your surroundings, and the way you want your home to feel for years to come. Every project begins with a deep-seated understanding of how an owner lives through the seasons, how they engage with their environment, and what brings them comfort. From there, the team designs spaces with inspired materials, rich textures, and intentional lighting. Each detail is carefully selected to reflect how life unfolds.

Expressing their commitment to authenticity and craftsmanship, the team engages with skilled architects, local artisans, and trusted builders to source materials and products that reflect the spirit of each location. It ensures every home feels grounded in its environment and deeply personal to those who live there.

New to Base Camp Design is Elliott Cole Home, a showcase for a thoughtfully composed collection of globally and locally sourced artisan expressions of custom, handmade furniture and décor. [Createyourbasecamp.com](https://www.createyourbasecamp.com)

## 2 LOFT THIRTY ONE

LOFT THIRTY ONE's signature "dirt-to-décor" approach redefines the design and build process. Based in Ponderay, their full-service studio combines interior design, construction management, custom furniture procurement, and a retail showroom. They bring a refined yet grounded aesthetic to every space, beginning with deep listening and ending with soulful, livable design. "Our design mantra is timelessness with heart," says founder Jodie Chapman. "We use aged woods, cozy leathers and bold textures that invite you to settle in. Our work must always enrich how our client's live, not just how it looks." [Loftthirtyone.com](https://loftthirtyone.com)

## 3 UPTIC STUDIOS

Uptic Studios' passion lies in designing homes that truly connect with the people who live in them. They begin from the ground up—where Architecture, Interior Design, and Procurement are created by their multidisciplinary team. This fully integrated approach enables interiors to respond organically to the architecture and the surrounding environment, so spaces are both beautiful and deeply purposeful.

"We design interiors to feel effortless, even though a great amount of energy goes into them," says Julie Collins, who along with her husband, Matt are Uptic's owners. We're enhancing the way our clients live while making their experience as enjoyable as possible." [Upticstudios.com](https://upticstudios.com)

## 4 NEST DESIGN + BUILD

Nest founder Kristina Schreiner's continuing goal is to redefine what it means to live well in the mountains. "My clients aren't always local," she says. "They need someone they can trust to make smart decisions on their behalf." A well-established name in high-end residential interiors across Sandpoint, Schweitzer and Coeur d'Alene, Kristina has a clear vision: to create homes that are modern and elegant, yet still warm, welcoming and deeply connected to their natural surroundings. Whether it's smart home integration, sumptuous materials, or durable finishes that can accommodate four-season mountain living, Kristina tailors each home to reflect the owner's individual desires. [Nestdesignsbuilt.com](https://nestdesignsbuilt.com)

## 5 ASPEN & STONE INTERIOR DESIGN

A complete destination for inspired living. That's how Sandpoint's Aspen & Stone describes their unique approach to living beautifully. Rooted in a mountain modern sensibility that reflects the spirit of the Inland Northwest, they seamlessly integrate three core features: full-service interior design, a curated home décor store, and in-house construction services. This multidimensional expertise means clients can dream, discover, and build, all in one place. From big-picture vision to the final finishing touches, every project benefits from cohesive communication, elevated creativity, and expert execution. [Aspenandstone.com](https://aspenandstone.com)

Endowed By Nature.  
Enriched By Imagination.  
This is Sylvan Ridge



This is a bountiful land where eagles soar, forests stand tall,  
and soon, outdoor lovers will thrive.

Here towering tamarack, fir, lodgepole and ponderosa pine fill breezes  
with scents of evergreen and the soft sounds of swaying boughs. Between and  
beyond the trees lie views of the Selkirk and Cabinet Mountains, the blue  
expanse of Lake Pend Oreille, the valley's colorful tapestry as well as the ski  
slopes and woodlands of Schweitzer.

Sylvan Ridge is envisioned to be an ideal place for a community that will be  
home to a mosaic of mountain-loving families that relish a life of Schweitzer's  
year-around adventures while embracing nature's most coveted gifts.

Thoughtfully and responsibly conceived, Sylvan Ridge will foster a robust  
environment of community connectivity with a diversity of residential  
opportunities, indoor and outdoor gathering places and spaces, plus an  
integrated network of car-free pathways.

To follow this inspiring story, please contact us at 208-812-7005  
or [info@smpdevelopment.com](mailto:info@smpdevelopment.com).



# Waterway To Enjoy The Day



Floating the Pack River near Sandpoint is a popular, all-natural pastime for all ages and abilities. While the upper Pack River can be more challenging with falls and rapids, the lower Pack River's gentle current is ideal for family-friendly floats in canoes, kayaks, paddle boards, tubes or any river-worthy craft. This section offers plenty of twists and turns, opening your eyes to idyllic countryside scenes of forests, mountains, meadows and abundant wildlife. There are sandy beaches for swimming, or you can just slip overboard for a refreshing dip. Several shuttle options are available to get you to and from both ends of your float.

A handy pre- and post-float stop is the Pack River Store, a Sandpoint tradition since 1976. Here you can grab a cold one, a tasty wine and a homemade, comfort food meal. Owners Alex (a California Culinary Academy graduate) and Brittany (a Sandpoint native) Jacobson prepare everything from hearty breakfasts and lunches to monthly prime rib dinners. Search: Floating-The-Pack-River Visit: [packriverstore.com](http://packriverstore.com)



# Live To Ski? Ski

"My wife and I grew up skiing Schweitzer and enjoying the mountains. Now, with our beautiful new house in Crystal View, our two daughters and son can have their own fun skiing, hiking and biking in a very special way."

—Spencer Williams

This is your extremely rare opportunity to own a panoramic view ski-in/ski-out homesite on the highest slopes of Schweitzer, the largest ski resort in Washington and Idaho. Another fun fact: it also overlooks the largest lake in Washington and Idaho.

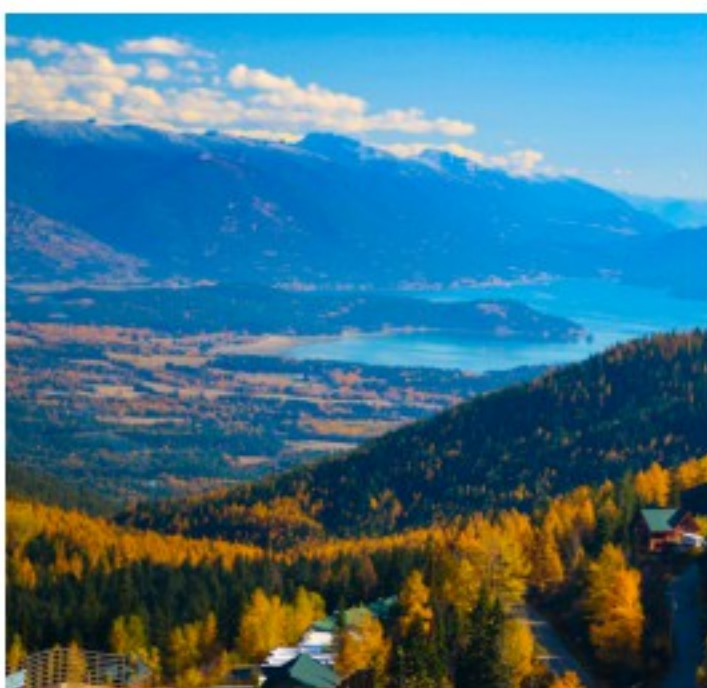
Your custom retreat in Crystal View gives you instant access to some of the best skiing, biking, hiking and mountain lake recreation in the Pacific Northwest—with all the comforts of home.



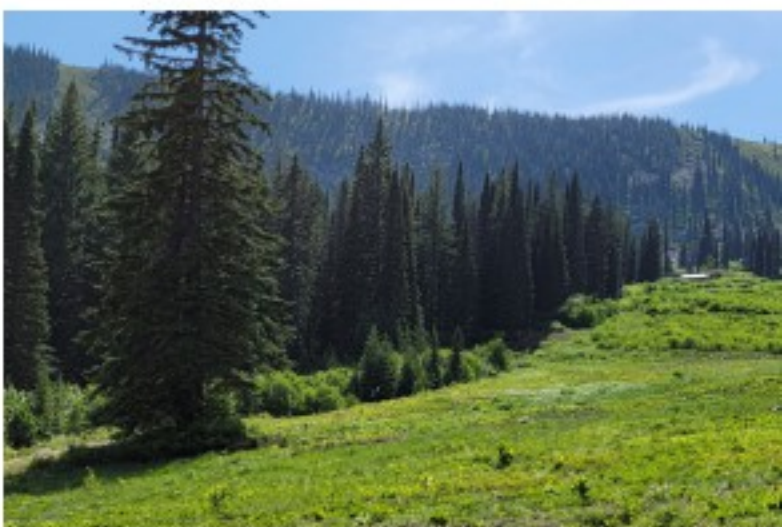
An extraordinary expression of ski-in/ski-out living by Eerkes Architects. This 2-story, 4-bedroom, 5-bathroom home is your personal portal to unparalleled alpine adventures.



Living here is like a window into the mountains.



Inspiring images of brightly painted Tamarack and Aspen forests welcome you to autumn's impressive arrival.



A bounty of visual delights embrace magnificent views of the lake and the valley below. Days begins with the lake glistening in the sun and a sky show of clouds.



The Williams family home is Crystal View's initial custom residence. Designed by Kirsten Ehrhardt of Cascade Architecture & Design, it features 5 bedrooms, 5.5 bathrooms, a game room, speak-easy style den, spa with sauna, and spectacular views from its open great room.



DISCLAIMER: Schweitzer resort amenities are open to the public and are not included in homesite purchase. All rendering images, illustrations, features, and information presented in this publication are for informational purposes only and are subject to change without notice. The description of the property and the project is provided for information only, and is not intended to be an offer to sell nor a solicitation of offers to buy real estate. Obtain the proper legal advice before making any decision.

# Where You Live.



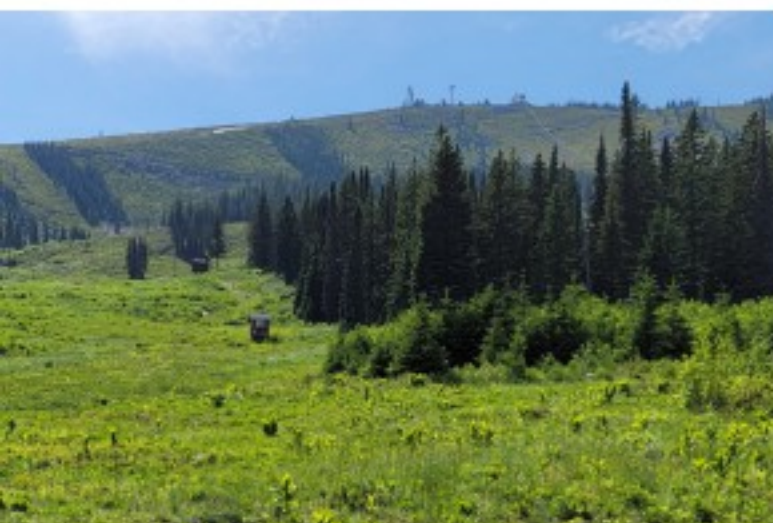
Always getting the low seat.



After carving the powdery slopes or two-wheeling the summer trails, you can gather and entertain in refined, yet welcoming style or just relax in leisurely comfort inside or out.



For pre and après skiing, our 300 inches of annual snowfall make sure you find plenty of fun to please everyone.



Views of Lake Pend Oreille, ski trails, forested mountains opening in the morning sun and end each evening with soft pastels.



This available home design by Uptic Studios showcases expansive window walls and a grand deck opening to dramatic panoramas. It includes 3 bedrooms, 3.5 bathrooms, a deluxe ski locker room, plus a hot tub, all in 3,000 square feet. There are four additional homes in their Crystal View collection.

This intimate, gated enclave is within walking, biking and skiing distance of Schweitzer's lively amenities and activities. Restaurants, lodging, lounges, entertainment, daycare, concierge services as well as the health-and-wellness focused Cambium spa are all here. Of course, the fun-loving town of Sandpoint, Idaho, is our charming neighbor.

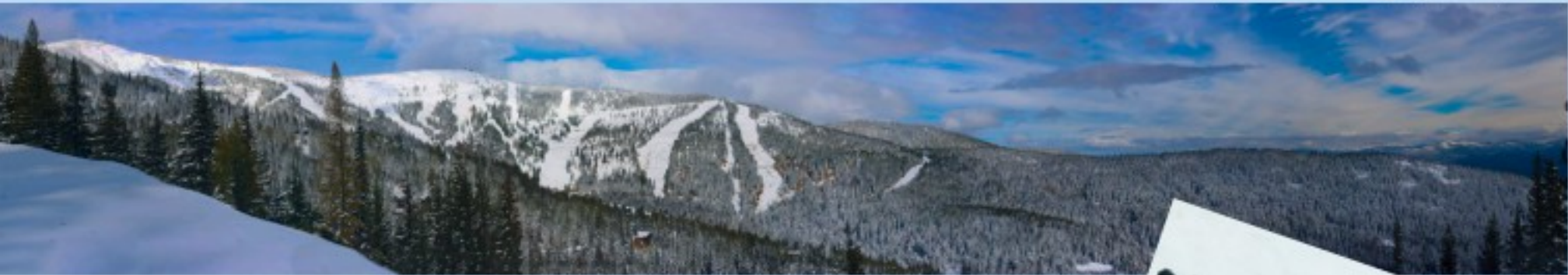
These coveted homesites range from approximately  $\frac{1}{4}$  to  $\frac{1}{2}$  acre and come complete with underground utilities.

Discover Crystal View and reward your family with something incomparable.

**Please contact us for more information on homesites and our collection of specially designed custom homes: 208-812-7005 or [info@smpdevelopment.com](mailto:info@smpdevelopment.com).**



Conceptual and used for illustrative purposes only. They do not accurately represent the features of any homesite configuration or specific condominium unit. Everything presented is subject to change or property report required by federal law and read it before signing anything. No Federal Agency has judged the merits or value, if any, of this property.



# Where Your Second Home Becomes Your First Love.



Embrace the enchantment of mountain lake living.

Imagine having a mountain home where binoculars and telescopes are as mandatory as skis, boards and bikes.

Above and beyond the commonplace, a new mountainside community is being created at Schweitzer. Aptly called Alpenglow, its plan includes a sequestered enclave of homesites, nested high among towering pines. It commands unparalleled panoramas of Lake Pend Oreille, the Cabinet range, forested mountains and Schweitzer’s celebrated ski runs. Adventurous days end with a colorful light show softly glowing over snow-veiled peaks.

Scheduled to be available this winter, this cache of dazzling view homesites are planned to be generously sized between ¼ and ½ acre. You’ll be able to find just the right place for your castle in the sky or contemporary family playhouse. Either way, you can ensure your custom home will gracefully accommodate your family, visiting friends and business associates as well as everyone’s recreational equipment throughout the year.



Lake Pend Oreille is the centerpiece of a conceptual custom home by Uptic Studios.



Snuggled into the mountainside, a conceptual home custom-designed by Uptic Studios.

## Be Ready To Bedazzled

Offering an exceptional level of privacy and tranquility, Alpenglow is designed for only single-family homes. Its site is set above the hustle and bustle of Schweitzer Village, yet only five minutes away from all the fun amenities and activities.

Not only is access to Schweitzer’s uncrowded 2,900 skiable acres and 4,350 acres of backcountry terrain close-by, you’ll also find neighborhood connections to Gnarnia, Middle Earth, Sidewinder, Corkscrew and Sparky biking and hiking trails—your portal to the 40-mile community network.

As planned, all homesites will be served by community-maintained roads and are approved for building. Available utilities will include electricity, water, sewer, high-speed internet and natural gas. Projected homesite prices start at \$450,000.

Please contact us for more information on Alpenglow homesites and Uptic Studio’s collection of specially designed custom homes: 208-812-7005 or [info@smpdevelopment.com](mailto:info@smpdevelopment.com).

## ALPENGLOW AT SCHWEITZER

DISCLAIMER: Schweitzer resort amenities are open to the public and are not included in homesite purchase. All rendering images, illustrations, features, and information presented in this publication are conceptual and used for illustrative purposes only. They do not accurately represent the features of any homesite configuration or specific condominium unit. Everything presented is subject to change or elimination without notice. The description of the property and the project is provided for information only, and is not intended to be an offer to sell nor a solicitation of offers to buy real estate. Obtain the property report required by federal law and read it before signing anything. No Federal Agency has judged the merits or value, if any, of this property.



# Building Excitement

Your vision is coming to life. Your architect, interior designer and landscape designer have followed your dream. Now you need to find the right builder to actually create your dream. Building in a mountain environment calls for a greater level of experience and expertise than building in the valley. Here are a few local companies that fill the bill.

## StanCraft Construction Group

Based in North Idaho, StanCraft Construction Group is an elite-level builder serving clients throughout the Inland Northwest. They have decades of experience creating custom homes that combine refined elegance with the strength and functionality needed for mountain living.

From engineering solutions for steep terrain to sourcing appropriate materials, they are known for executing complex builds. Whether it's a secluded mountain retreat, or a modern rustic lodge tucked in the woods, every home reflects their commitment to craftsmanship, integrity, and the surrounding natural beauty.

[stancraft.com](http://stancraft.com)



## MB Builders

Located in Hayden, MB Builders has been constructing custom homes for more than 30 years. They know that high quality craftsmanship and professionalism is essential in every detail—from the footings to the final finishes—because they understand how important it is to their clients.

They especially appreciate the opportunity to build one-of-a-kind homes at Schweitzer. They are continually rewarded by creating timeless works of art that honor the mountain landscape while enabling happy homeowners to more easily enjoy year-round alpine adventures as well as the entire building process.

[mbbuilders.com](http://mbbuilders.com)



## Adept Construction

Collectively, the Adept team has been specializing in navigating complex, custom builds in unique environments for 30 years. Based in Spokane, they have the expertise to meet the demands of mountain construction, such as steep terrain, high snow-low temperature environments, variable weather, and unique logistics. They excel at selecting materials that balance performance, aesthetics and budget.

Adept's dedicated project manager and full-time, on-site superintendent ensure clear and continual communication and seamless coordination with owners, architects and designers from initial permitting to the thrill of move-in day.

[adept-construction.com](http://adept-construction.com)



## Idagon

Since 2008, Idagon has built a reputation for integrity and craftsmanship on the slopes of the Selkirk Mountains, including Schweitzer resort. Through comprehensive collaboration, they've successfully surpassed challenging construction sites, mercurial mountain weather and logistical issues.

The extensive experience of their project managers, craftsmen, and design professionals is evident in all their mountain builds. Whether it be tight construction timelines or engineering for epic views and heavy snow loads—they consistently perform with confidence in mountain projects of any size or scope. [idagon.com](http://idagon.com)

## Smithwright Builders

For more than 35 years, Smithwright has focused on the seamless integration of architecture and landscape. Blending deep regional knowledge with advanced techniques, the team deftly manages the natural complexities of slopeside and lakefront settings. By collaborating with world-renowned architects, Smithwright brings ambitious designs to life with precision and care. They tailor foundations to each site's topography, minimizing excavation and concrete costs. Their dedication to clarity and accountability transforms a multi-faceted process into a rewarding and pleasurable journey.

[smithwright.co](http://smithwright.co)



# Be A Global Gourmet

Take a deliciously different cultural and culinary tour around the globe without leaving North Idaho.



## ◀ LEBANESE: Flavors of Phoenicia

At Flavors of Phoenicia, every dish takes you somewhere—from the mountain towns of Northern Idaho to the bustling markets of Beirut. Owned and operated by Hadya, who was born and raised in Lebanon, and her husband, Craig, a proud Idaho native, this family-run restaurant brings the rich, aromatic flavors of the Mediterranean to the Pacific Northwest. One of their most beloved offerings, the Small Lebanese Family Platter, features golden turmeric rice crowned with three types of savory kabobs: chicken tawouk, chicken sumac, and grilled kafta. Each bite is complemented by a crisp parsley-onion-sumac mix, tangy pickled turnips, lettuce, cucumber and tomato. Flavors of Phoenicia offers an experience full of color, warmth, and unforgettable taste.

477100 Highway 95, Ponderay, ID



## ◀ THAI: Thai Nigiri

Two rich culinary traditions—Thai cuisine and Japanese sushi—come together at Thai Nigiri, part of the downtown Sandpoint food scene since 2015. In a warm, family-friendly setting, husband-and-wife team Tim Tientong and Uma Mahamat serve up flavorful, comforting Thai classics like Pad Thai, Tom Kha soup, and Yellow Curry. Tim is also a skilled sushi chef with twenty years' experience. For a local favorite, order the Rocky Mountain Roll, which combines crab, avocado and cucumbers topped with seaweed tempura, spicy tuna, yum yum and eel sauce. Feeling bold? Try the Salmon Killer: spicy salmon and cucumbers topped with salmon, spicy mayo and sriracha.

209 N 1st Avenue, Sandpoint, ID

208-265-2587

thainigiri.com



## ▶ MEXICAN: Loco's Kitchen

Loco's Kitchen is far from your average taco truck. Here in Sandpoint, Alfredo ("El Loco" himself), along with wife Alex serve fresh, modern, and authentic Mexican street food with a creative twist. From classic street tacos to signature creations like the Locos Crunch Wrap — a crave-worthy burrito-tostada mashup — every bite is packed with bold flavors and love. Don't miss the Idaho Burrito, loaded with steak, fries, cheese, pico de gallo, and chipotle — a local favorite that blends North- and South-of-the-Border flair.

208-444-7932

locoskitchen.com

## ▶ INDIAN: The Mango Tree Indian Kitchen + Taphouse

When opening his Mango Tree restaurant, Rakesh Kaushal hoped to give people here in Sandpoint a unique look into the food he grew up loving on the other side of the world. Rakesh, born and raised in the northwestern Punjab region of India, created his menu with a core of authentic, traditional Punjab cuisine highlighted by innovative fusion dishes. You'll find classics like Samosa Chaat: traditional fried pastries dressed with chickpeas, fresh tomatoes, onions, yogurt, mint chutney and tamarind chutney. But for something a little different, try the popular Butter Chicken Poutine, made with butter chicken, paneer and French fries. And if you're feeling adventurous—why not Naanchos?

102 S. 1st Ave. #101 Sandpoint, ID

themangotreerestaurants.com



# The Lights Fantastic

Imagine yourself beneath a vast, star-swept midnight sky... high on a mountain's ridge, or on the shore of a lake that's mirror-still... enjoying the tranquility that only a place like this can provide. You're about to experience a light show so spectacular, only Mother Nature herself could have conjured it.

The Northern Lights are a mysterious phenomenon that appear periodically in Earth's darkest Northern skies. The Aurora Borealis, as it is also known, is an awe-inspiring display, as seemingly supernatural, flowing waves of colors brush the night sky. It's actually caused when charged

particles from the sun collide with Earth's electromagnetic field; it appears when solar storms trigger—a high enough level of geomagnetic activity in Earth's atmosphere.

We're uniquely fortunate here in Idaho. Along with our high latitude, we enjoy wide-open spaces and skies free of light pollution, making the Aurora Borealis both brighter and easier to see from here. It's no surprise that Idaho is home to America's first Gold-Tier International Dark Sky Reserve. You can also observe the lights from one of the state's Dark Sky Parks or Towns—or, often, from right here in the area around Schweitzer.

# On The Trail To Adventure



**B**eing able to savor the mountain life year 'round is an exceptional part of the Schweitzer experience. The resort has more than 40 miles of biking and hiking trails extending instant access to the mountain's extraordinary treasures—après snow.

This inspired matrix connects to the (xx mile) Little Sand Creek Watershed Trail Network maintained by Sandpoint, Pend Oreille Pedalers and the Selkirk Recreation District.

Ten miles of new trails have opened this year, including the super scenic Upper Gnarnia and Gnarnia trails that link up with existing tracks to take you from 6,100 feet to 2,600 feet—that's 3,500 feet of heart-throbbing vertical! There's plenty more to come. Four new trails will add seven additional miles in the coming year.

What's really appealing to bikers and hikers of all ages and skill levels is the variety of trails. Just like ski runs, there are ratings of green, blue and black. So weekend wheelers, laid-back cruisers and high-skill shredders will find—like Goldilocks—something that's "just right."

Whether you're into big jumps, berms, wood planks, rock rolls or hybrid trails featuring a mix of flowy and technical terrain, the exuberant band of professional and volunteer trail builders have created a true mountain masterpiece. Trail maps: [Schweitzer.com/mountain-info/maps](https://www.schweitzer.com/mountain-info/maps)



# Idaho's Great Lake

Carved out by Ice Age glaciers, banded by three epic mountain ranges, the extraordinary Lake Pend Oreille (*pon der ray*) offers virtually unlimited family adventures and activities. This enormous body of water, right down the mountain from Schweitzer, is the largest lake in either Idaho or Washington. It's 43 miles long with 111 miles of shoreline. At 1,158 feet, it's also the fifth deepest lake in America—the U.S. Navy even tests submarines from a station at the south end of the lake.



## Wake up to wet and wild adventures

An exhilarating benefit of this sea-sized playground is an ocean-inspired sport called wake surfing. Never overrun by hordes of boaters, the lake has the wide open spaces to make it all about fun. InlandWake is a local company that offers all the services and equipment you want, whether it's beginner lessons, how-to-get-better lessons, or a whole boat with a variety of boards, an experienced instructor and a USCG-licensed captain. For new boat owners, there is a special course that will have you safely creating the perfect wave for every level of surfer. Visit: [Inlandwake.com](http://Inlandwake.com)



Lake Pend Oreille's huge expanse welcomes almost any water-worthy pleasure craft, from sailboats, ski boats, houseboats, fishing boats and jet skis to human-powered vessels such as kayaks, canoes and paddleboards. Don't have a boat handy? There are rentals of sail, paddle and power vessels at various marinas around the lake. Shoreline exploits span from cliff diving, scuba diving, and camping to swimming, fishing, wildlife viewing, hiking, biking, picnicking, or just lounging and playing on the beach.

Speaking of beaches, check these out: Sandpoint City Beach, Sunnyside, and Trestle Creek.

You'll also find an array of unique restaurants right on the water—perfect for relaxing with a cold drink, a good meal and unforgettable water and wildlife views.

Visit: <https://www.sandpointonline.com/rec/lakeguide/index.html>